

## Whistler Series 2026

January 2026 through December 2026

Humboldt Yacht Club

Eureka California USA

### SAILING INSTRUCTIONS

- **Rules**
  - The series will be governed by the *Racing Rules of Sailing* as modified here.
  - **Safety Equipment Requirements:** Each competitor in this series will self-certify that their boat and crew are sailing in compliance with US Sailing Safety Equipment Requirements (SER) for Coastal racing if selecting the Whistler Buoy ocean course or Near Shore racing if selection the In-Bay alternative course. Modifications by Humboldt Yacht Club to the SERs are available in the club room.
  - **Safety.** A boat and her crew is the sole and inescapable responsibility of the “person in charge” as per RRS 46, who shall ensure that the boat is seaworthy and manned by an experienced crew with sufficient ability and experience to face bad weather. S/he shall be satisfied as to the soundness of hull, spars, triggering, sail and all gear. S/he shall ensure that all safety equipment is at all times properly maintained and safely stowed and the crew knows where it is kept and how it is to be used.
  - **Boat.** May be inspected at any time by an equipment inspector or measurer appointed for the event. If she does not comply with these regulations her entry may be rejected or she will be subject to a protest filed by the RC. A violation of the Safety Equipment Requirements may result in a penalty other than disqualification.
  - **Start Finish.** ALPHA START Navigation mark 19 and Committee boat or BRAVO START HYC flagpole if committee is on the deck.
  - **Skippers.** Must sign up for a race day either at the pre-race meeting or within 24 hours prior to the race day. Failure to sign up will preclude the boat from inclusion in the race scoring conducted that day
  - **Races.** Will be started as per Rule 26 with the following changes: Yellow flag or shape may replace class flag as Warning signal; blue flag or shape may replace P flag as

preparatory signal. Warning time of one minute may be adjusted by Race Committee within Rule 26.

- **Warning signal** of 3 short blasts may be given no later than 1 minute prior to start sequence.
- **A boat late** for a start may use its engine or any other means of propulsion after the preparatory signal to proceed directly to the edge of the starting area. The boat shall not, however, start until five minutes (or other prescribed interval) after stopping engine or otherwise complying with Rule 42.
- **Coast Guard Navigation Rules** will replace the corresponding rules of Part 2 between sunset and sunrise, and at all times between racing and non-racing boats.
- **Rule A5.3 will apply to this series.** As per A5.3, if the notice of race or sailing instructions state that rule A5.3 will apply, rule A5.2 is changed so that a boat that came to the starting area but did not *start*, did not *sail the course*, did not *finish*, retired or was disqualified shall be scored points for the finishing place one more than the number of boats that came to the starting area, and a boat that did not come to the starting area shall be scored points for the finishing place one more than the number of boats entered in the series.
- **A skipper abandoning** a race to assist a vessel or person in distress may elect to receive, for that race, points equal to his/her average for all races in which he/she ranked as a starter in that series.
- **A skipper sailing in the Whistler Series must satisfy the obligation to serve as race committee at least once during the year, by serving on a race day in another series.**
- **Finishing.** Finish line will be open to all boats while sailing and finishing.
- **Time limits:** A time limit associated with an average boat speed of 2 knots may be applied at the discretions of the race committee.
- **Protests** not satisfied by the 360/720 rule shall be brought to the race committee within 1 hour of the finish of the day of racing.
- **Withdrawal.** A boat that retires from a race shall notify the race committee by any means available as soon as possible.

## 2. SKIPPER RESPONSIBILITY

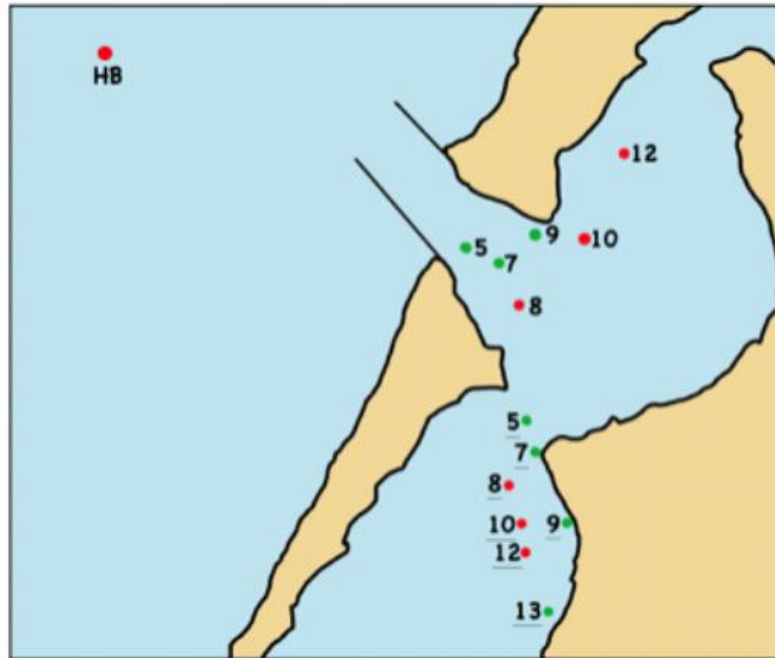
It shall be the sole responsibility of each yacht to decide whether or not to start or to continue to race. Each skipper must consider the conditions on the course with respect to his/her own capabilities and those of the boat and crew. The skipper must not infer that because a race will be sailed, the course is safe or without hazard. Nor should the skipper consider the minimum equipment requirements necessarily adequate. The skipper must bear the ultimate responsibility for decisions affecting the safety of the boat and should not commit to conditions that would jeopardize the boat, crew, or his/her sailing career.

3. Course Sheet

# HUMBOLDT YACHT CLUB

## WHISTLER RACE COURSE

12p 10p 9s 7s 5s HBp  
 5p 7p 9p 10s 12s



All marks are government navigation aids.  
 5-minute starting sequence.

The 720 penalty for fouls is in effect; protests must be made to RC within 30 mins after last race.

Time limit equal to a two-knot average for the course distance.

When transiting the bar, all vessels MUST stay within charted Entrance Channel.

**Skipper's Option: In-Bay Alternative:**

12p 10p 8p 5p 7p 8s  
10s 12s 13s 12p 10p 8p  
 7s 5s 8p 5p 7p 8p  
 7s 5s 8s 10s 12s  
 (Underline indicates marks in So. Bay)

